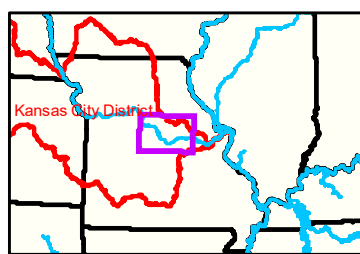


Notes

Gage_U

Herman Gage = 6.26 at time of collection 01 October 2020



LEGEND

	< 8		< 8 ft		Green Passing		Green		Green CAN
	8 - 9		8 - 9 ft		Red Passing		Red		Red NUN
	9 - 9.5		9 - 10 ft		Green Crossing				
	9.5 - 10		10 - 12 ft		Red Crossing				
	10 - 12		River Mile						
	12 - 14		Sailing Line						
	14 - 16		BSNP Structure						
	> 16		Levee						

Buoy

Green CAN
 Red NUN

Green
 Red
 Junction

Scale: 0 312.5 625 937.5 1,250 2,500 Feet

NOTES:
 Horizontal Coordinate System:
 World Geodetic System of 1984 (WGS84), projected to the
 Universal Transverse Mercator (UTM) Zone 15 North.
 Distance units in U.S. Survey Feet

Vertical Datum:
 Soundings are shown in feet and indicated depths
 are referenced to water surface at time of collection.

The information depicted on this map represents the results of a survey
 conducted on the date indicated and can only be considered
 to represent the general condition existing at that time.

The location of navigation aids are based on and provided by
 the U.S. Coast Guard.



DISCLAIMER: The U.S. Army Corps of Engineers (USACE) provides this information as a service to the public. It is not intended to be used for any purpose other than that for which it was prepared. The USACE makes no warranty, express or implied, regarding the accuracy, reliability, or completeness of the information provided. The USACE is not responsible for any errors or omissions in this information, or for any consequences arising from the use of this information. The USACE is not liable for any damages, including consequential damages, arising from the use of this information. The USACE is not responsible for any actions taken by any person based on the information provided.

KANSAS CITY DISTRICT MISSOURI RIVER AREA OFFICE	
Submitted by:	MIRAO
Reviewed by:	MIRAO
Checked by:	MIRAO

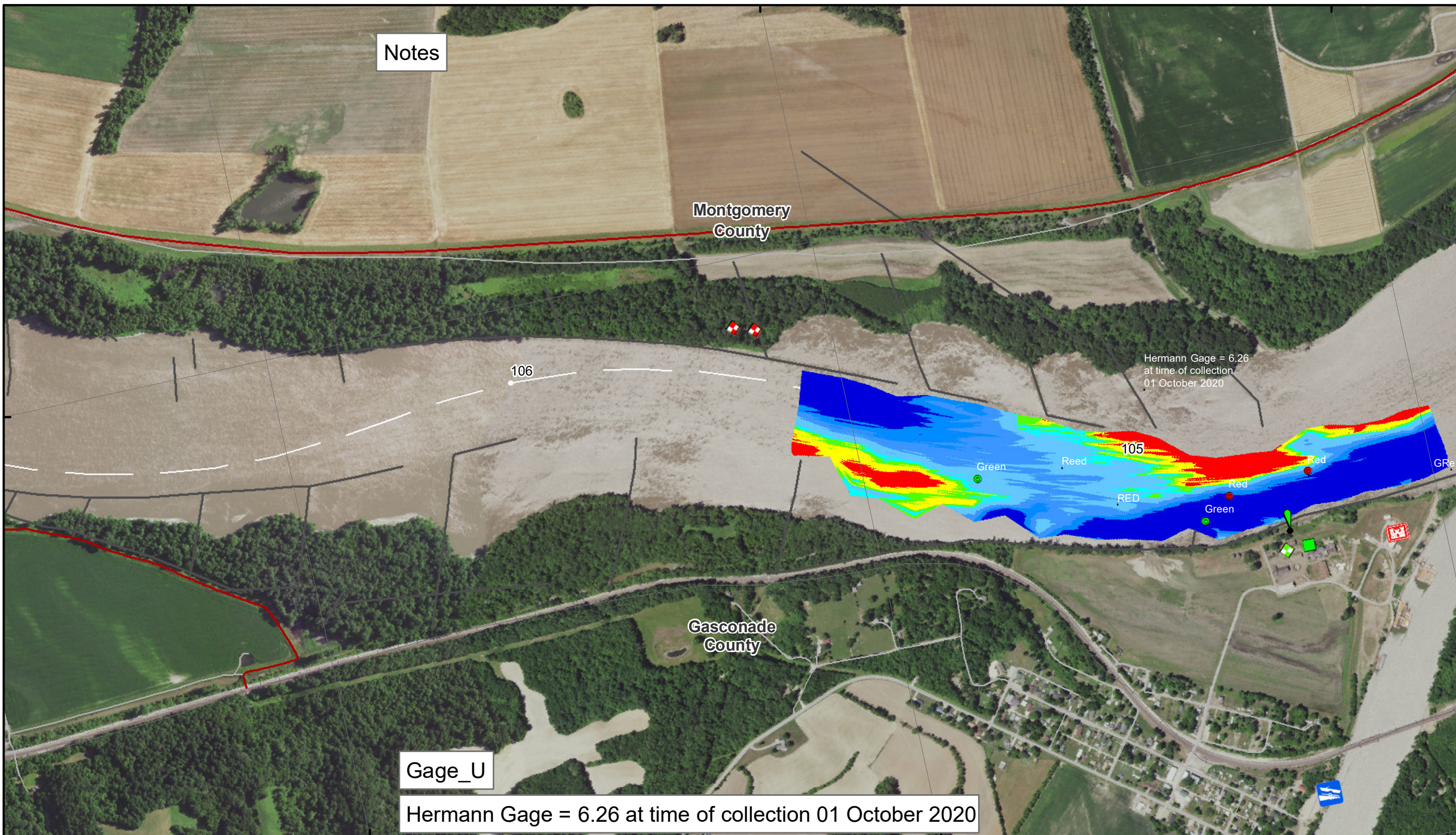
Survey Information
 MO_02_LMR
 MO_02_LMR_20201001_CS_104_5_105_5_SORT
 01 October 2020

**Sheet
 Number
 2 of 46**

91°35'W

91°34'W

91°33'W

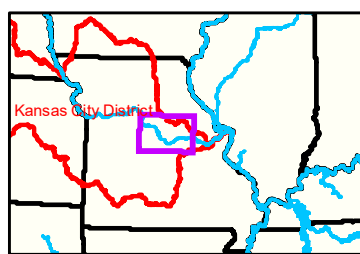


Notes

Gage_U

Hermann Gage = 6.26 at time of collection 01 October 2020

Hermann Gage = 6.26 at time of collection 01 October 2020



91°35'W

91°34'W

LEGEND

	< 8		< 8 ft		Green Passing		Green		Green CAN
	8 - 9		8 - 9 ft		Red Passing		Red		Red NUN
	9 - 9.5		9 - 10 ft		Green Crossing		Red Crossing		
	9.5 - 10		10 - 12 ft						
	10 - 12		River Mile						
	12 - 14		Sailing Line						
	14 - 16		BSNP Structure						
	> 16		Levee						

Buoy

	Green
	Red
	Junction

Scale: 0 312.5 625 937.5 1,250 2,500 Feet

NOTES:
 Horizontal Coordinate System:
 World Geodetic System of 1984 (WGS84), projected to the Universal Transverse Mercator (UTM) Zone 15 North. Distance units in U.S. Survey Feet

Vertical Datum:
 Soundings are shown in feet and indicated depths are referenced to water surface at time of collection.

The information depicted on this map represents the results of a survey conducted on the date indicated and can only be considered to represent the general condition existing at that time.

The location of navigation aids are based on and provided by the U.S. Coast Guard.



DISCLAIMER: The U.S. Army Corps of Engineers (USACE) provides this information for informational purposes only. It is not intended for use in any legal proceeding or as a basis for any claim. The USACE makes no warranty, express or implied, regarding the accuracy, completeness, or reliability of the information provided. The USACE is not responsible for any errors or omissions in this information. The user assumes all liability for any use of this information.

KANSAS CITY DISTRICT MISSOURI RIVER AREA OFFICE	
Submitted by:	MIRAO
Reviewed by:	MIRAO
Checked by:	MIRAO

Survey Information

MO_02_LMR
 MO_02_LMR_20201001_CS_104_5_105_5_SORT
 01 October 2020

Sheet Number
 3 of 46

38°47'N

38°41'N

38°40'N